

www.cabintek.com

THESE DRAWINGS ARE AUTHORIZED TO GIVE THE CLIENT APPROXIMATE DIMENSIONS. CABINTEK OR ITS AFFILIATED COMPANIES ARE NOT RESPONSIBLE FOR DIMENSION OR MATERIAL DEVIATIONS THAT MAY OCCUR IN THE BUILDING OR SUPPLY PROCESS. THESE DRAWINGS ARE INTENDED FOR CONSTRUCTION OF THE WOODY LOG KIT. THE CLIENT IS RESPONSIBLE FOR OBTAINING REQUIRED PERMITS.

CABINTEK LLC AND AFFILIATED COMPANIES CLAIMS OWNERSHIP OF THIS DOCUMENT, AND THE IDEAS AND DESIGN INCORPORATED HEREIN, AS AN INSTRUMENT OF PROFESSIONAL SERVICES, IS THE SOLE PROPERTY OF CABINTEK LLC, AND IS NOT TO BE USED IN WHOLE OR IN PART FOR ANY OTHER PROJECT OR PURPOSE WITHOUT THE EXPRESSED WRITTEN AUTHORIZATION OF CABINTEK LLC.

THE USE OF NOTES "BY OWNER", "BY CABINTEK" OR SHADING ON THE DRAWINGS ARE USED FOR CLARIFICATION PURPOSES AND ARE NOT TO BE CONSTRUED AS DEFINING THE OVERALL SCOPE OF WORK BE EITHER PARTY

# GREEB 20'x24'

MAIN FLOOR 480 SF

© CABINTEK LLC

LOFT FLOOR 240 SF



www.cabintek.com

THESE DRAWINGS ARE AUTHORIZED TO GIVE THE CLIENT APPROXIMATE DIMENSIONS. CABINTEK OR ITS AFFILIATED COMPANIES ARE NOT RESPONSIBLE FOR DIMENSION OR MATERIAL DEVIATIONS THAT MAY OCCUR IN THE BUILDING OR SUPPLY PROCESS. THESE DRAWINGS ARE INTENDED FOR CONSTRUCTION OF THE WOODY LOG KIT. THE CLIENT IS RESPONSIBLE FOR OBTAINING REQUIRED PERMITS.

CABINTEK LLC AND AFFILIATED COMPANIES CLAIMS OWNERSHIP OF THIS DOCUMENT, AND THE IDEAS AND DESIGN INCORPORATED HEREIN, AS AN INSTRUMENT OF PROFESSIONAL SERVICES, IS THE SOLE PROPERTY OF CABINTEK LLC, AND IS NOT TO BE USED IN WHOLE OR IN PART FOR ANY OTHER PROJECT OR PURPOSE WITHOUT THE EXPRESSED WRITTEN AUTHORIZATION OF CABINTEK LLC.

THE USE OF NOTES "BY OWNER", "BY CABINTEK" OR SHADING ON THE DRAWINGS ARE USED FOR CLARIFICATION PURPOSES AND ARE NOT TO BE CONSTRUED AS DEFINING THE OVERALL SCOPE OF WORK BE EITHER PARTY

## GREEB 20'x24'

MAIN FLOOR 480 SF

LOFT FLOOR 240 SF

© CABINTEK LLC



www.cabintek.com

THESE DRAWINGS ARE AUTHORIZED TO GIVE THE CLIENT APPROXIMATE DIMENSIONS. CABINTEK OR ITS AFFILIATED COMPANIES ARE NOT RESPONSIBLE FOR DIMENSION OR MATERIAL DEVIATIONS THAT MAY OCCUR IN THE BUILDING OR SUPPLY PROCESS. THESE DRAWINGS ARE INTENDED FOR CONSTRUCTION OF THE WOODY LOG KIT. THE CLIENT IS RESPONSIBLE FOR OBTAINING REQUIRED PERMITS.

CABINTEK LLC AND AFFILIATED COMPANIES CLAIMS OWNERSHIP OF THIS DOCUMENT, AND THE IDEAS AND DESIGN INCORPORATED HEREIN, AS AN INSTRUMENT OF PROFESSIONAL SERVICES, IS THE SOLE PROPERTY OF CABINTEK LLC, AND IS NOT TO BE USED IN WHOLE OR IN PART FOR ANY OTHER PROJECT OR PURPOSE WITHOUT THE EXPRESSED WRITTEN AUTHORIZATION OF CABINTEK LLC.

THE USE OF NOTES "BY OWNER", "BY CABINTEK" OR SHADING ON THE DRAWINGS ARE USED FOR CLARIFICATION PURPOSES AND ARE NOT TO BE CONSTRUED AS DEFINING THE OVERALL SCOPE OF WORK BE EITHER PARTY

## GREEB 20'x24'

MAIN FLOOR 480 SF

LOFT FLOOR 240 SF

© CABINTEK LLC



[www.cabintek.com](http://www.cabintek.com)

THESE DRAWINGS ARE AUTHORIZED TO GIVE THE CLIENT APPROXIMATE DIMENSIONS. CABINTEK OR ITS AFFILIATED COMPANIES ARE NOT RESPONSIBLE FOR DIMENSION OR MATERIAL DEVIATIONS THAT MAY OCCUR IN THE BUILDING OR SUPPLY PROCESS. THESE DRAWINGS ARE INTENDED FOR CONSTRUCTION OF THE WOODY LOG KIT. THE CLIENT IS RESPONSIBLE FOR OBTAINING REQUIRED PERMITS.

CABINTEK LLC AND AFFILIATED COMPANIES CLAIMS OWNERSHIP OF THIS DOCUMENT, AND THE IDEAS AND DESIGN INCORPORATED HEREIN, AS AN INSTRUMENT OF PROFESSIONAL SERVICES, IS THE SOLE PROPERTY OF CABINTEK LLC, AND IS NOT TO BE USED IN WHOLE OR IN PART FOR ANY OTHER PROJECT OR PURPOSE WITHOUT THE EXPRESSED WRITTEN AUTHORIZATION OF CABINTEK LLC.

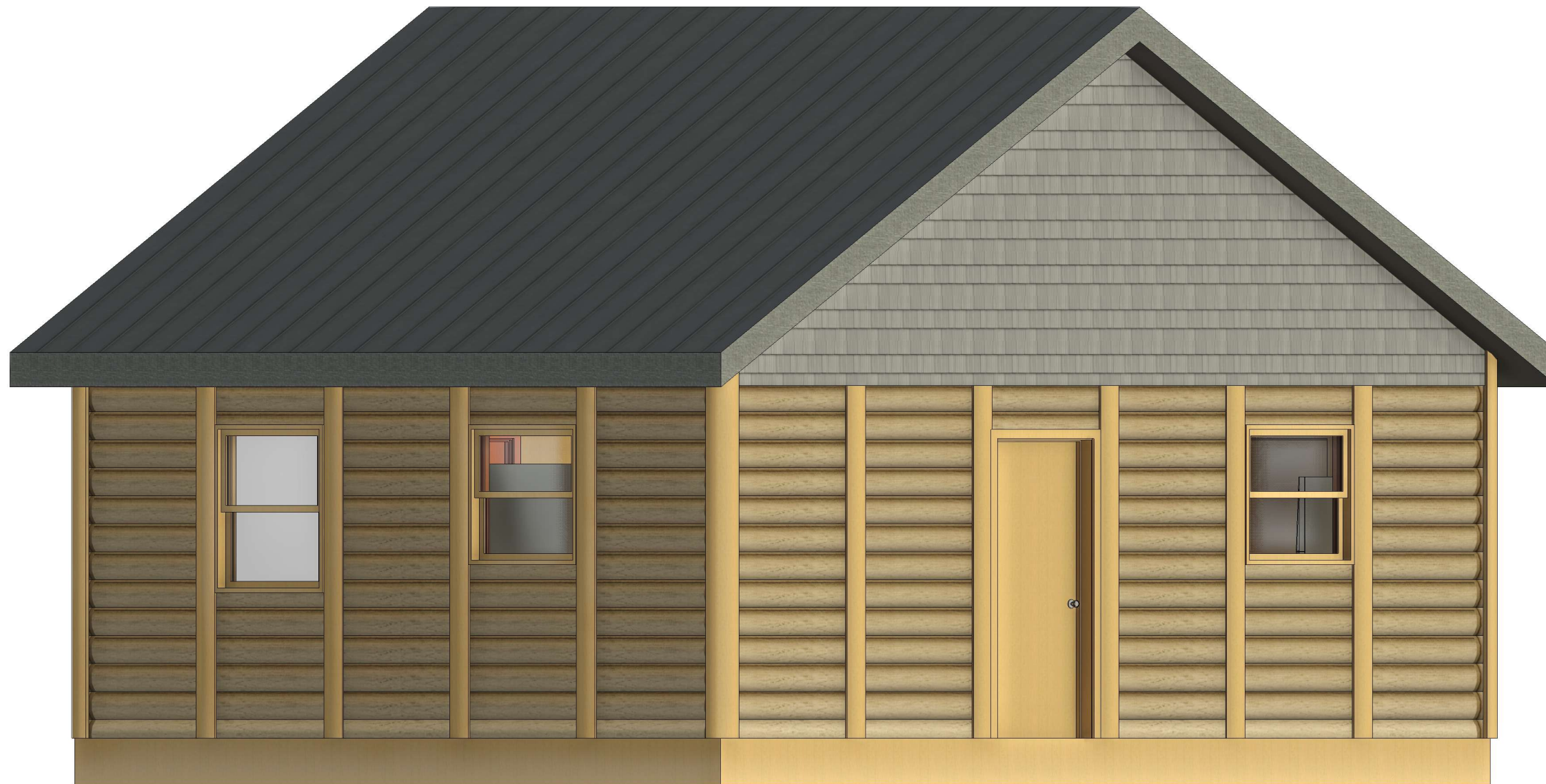
THE USE OF NOTES "BY OWNER", "BY CABINTEK" OR SHADING ON THE DRAWINGS ARE USED FOR CLARIFICATION PURPOSES AND ARE NOT TO BE CONSTRUED AS DEFINING THE OVERALL SCOPE OF WORK BE EITHER PARTY

## GREEB 20'x24'

MAIN FLOOR 480 SF

LOFT FLOOR 240 SF

© CABINTEK LLC



www.cabintek.com

THESE DRAWINGS ARE AUTHORIZED TO GIVE THE CLIENT APPROXIMATE DIMENSIONS. CABINTEK OR ITS AFFILIATED COMPANIES ARE NOT RESPONSIBLE FOR DIMENSION OR MATERIAL DEVIATIONS THAT MAY OCCUR IN THE BUILDING OR SUPPLY PROCESS. THESE DRAWINGS ARE INTENDED FOR CONSTRUCTION OF THE WOODY LOG KIT. THE CLIENT IS RESPONSIBLE FOR OBTAINING REQUIRED PERMITS.

CABINTEK LLC AND AFFILIATED COMPANIES CLAIMS OWNERSHIP OF THIS DOCUMENT, AND THE IDEAS AND DESIGN INCORPORATED HEREIN, AS AN INSTRUMENT OF PROFESSIONAL SERVICES, IS THE SOLE PROPERTY OF CABINTEK LLC, AND IS NOT TO BE USED IN WHOLE OR IN PART FOR ANY OTHER PROJECT OR PURPOSE WITHOUT THE EXPRESSED WRITTEN AUTHORIZATION OF CABINTEK LLC.

THE USE OF NOTES "BY OWNER", "BY CABINTEK" OR SHADING ON THE DRAWINGS ARE USED FOR CLARIFICATION PURPOSES AND ARE NOT TO BE CONSTRUED AS DEFINING THE OVERALL SCOPE OF WORK BE EITHER PARTY

## GREEB 20'x24'

MAIN FLOOR 480 SF

LOFT FLOOR 240 SF

© CABINTEK LLC