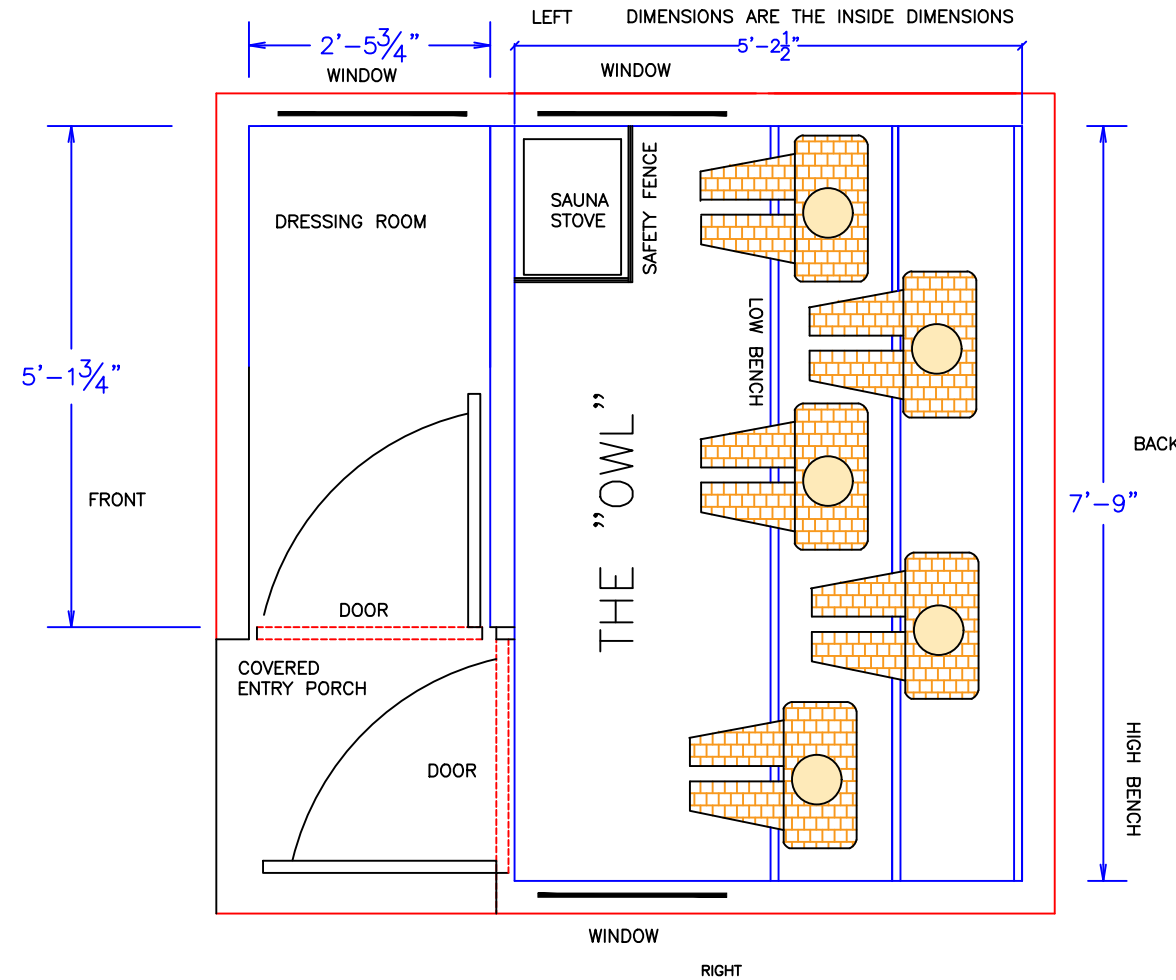
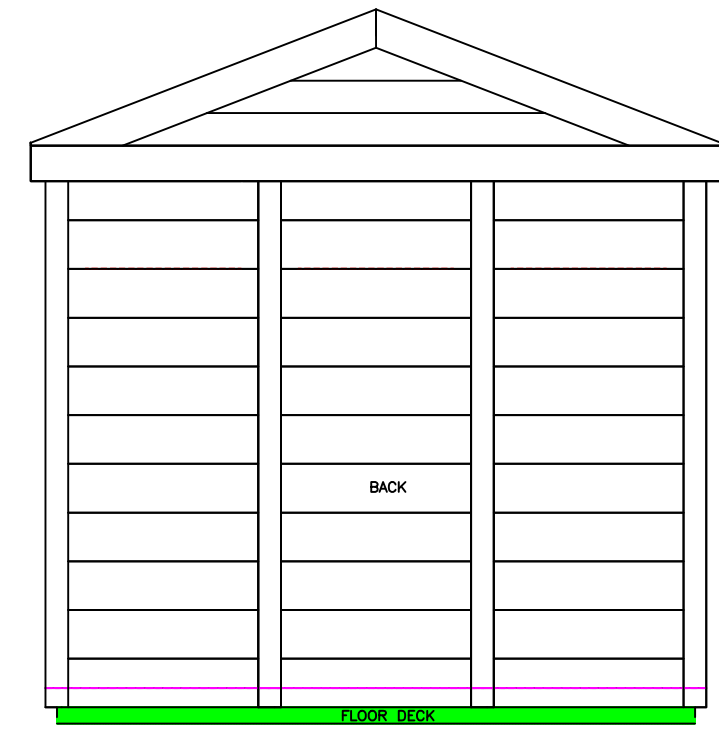
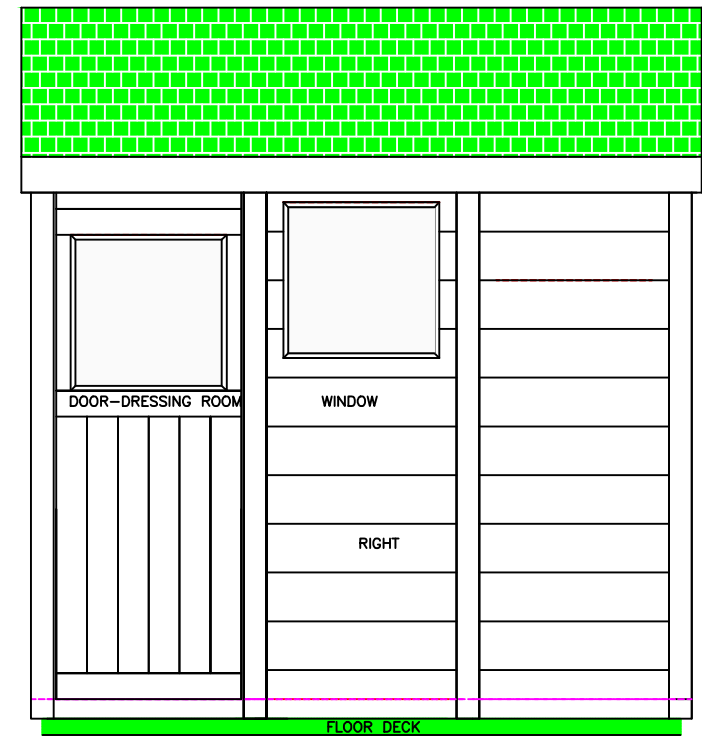
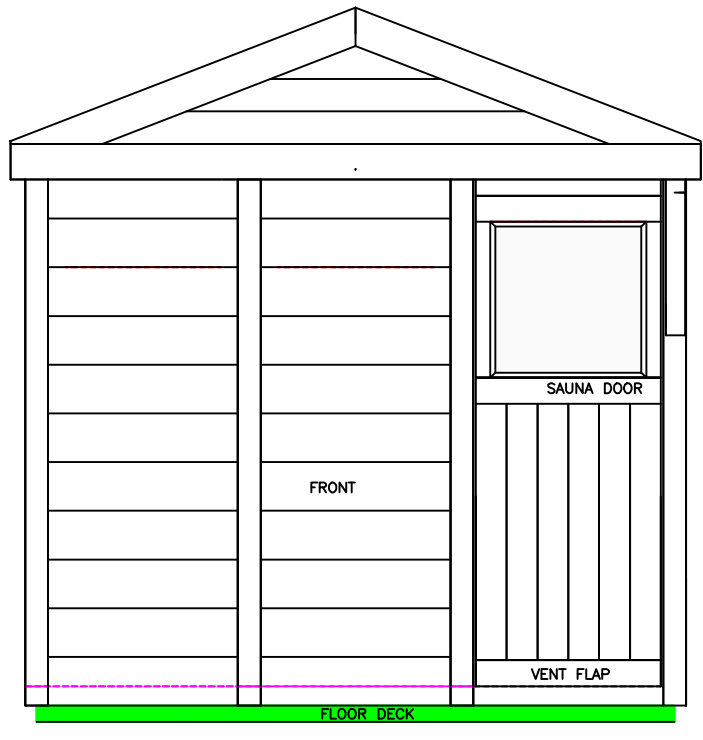
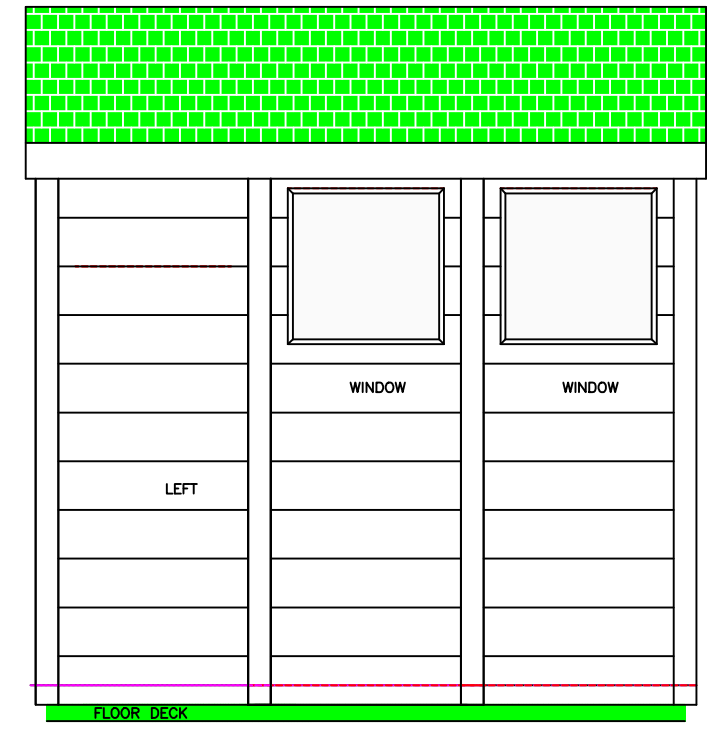


THE "OSPREY" SAUNA 5 PERSON/WITH DRESSING ROOM



INCLUSIONS; THE OSPREY MODEL WITH DRESSING ROOM
 MASSIVE WHITE PINE LOG SIDING ON THE EXTERIOR
 CEDAR CEILING AND WALLS IN THE INTERIOR
 FULLY INSULATED CEILING, WALL AND FLOOR
 INDOOR OUT DOOR CARPETING
 CHOOSE WOOD BURNING OR ELECTRIC SAUNA STOVE
 BENCH PARTS FOR PERSONAL SEATING LAYOUT
 SAFETY SAUNA PROTECTION FENCE
 WINDOWS IN ALL DOORS
 OPTIONAL WINDOWS IN SAUNA AND DRESSING ROOM
 3 BATTERY OPERATED LANTERNS
 SAUNA DOOR VENTS TOP AND BOTTOM
 LOCKABLE HARDWARE
 WOOD TONE SHINGLES FOR ROOF
 ROOF FLASHING AND UNDERLAYMENT
 2X6 TREATED LUMBER FLOOR DECK
 COMES UNSTAINED FOR PERSONAL CHOICES
 COMPLETE INSTRUCTION INCLUDED
 ALL PANELS ARE PRE-BUILT FOR EZ INSTALLATION
 ROOF AND DECK FLOOR MATERIALS ARE PRE-CUT
 ALL FASTENERS INCLUDED
 NO SPECIAL TOOLS REQUIRED
 WILL REQUIRE 6 BRICK PIERS (NOT INCLUDED)
 FOR OUTSIDE INSTALLATION



THESE DRAWINGS ARE AUTHORED TO GIVE THE CLIENT APPROXIMATE DIMENSIONS. CABINTEK LLC/WOODY OR ITS AFFILIATED COMPANIES ARE NOT RESPONSIBLE FOR DIMENSION OR MATERIAL PLAN DEVIATIONS THAT MAY OCCUR IN THE BUILDING OR SUPPLY PROCESS. THESE DRAWINGS ARE INTENDED FOR CONSTRUCTION OF THE WOODY LOG KIT. THE CLIENT IS RESPONSIBLE FOR OBTAINING REQUIRED PERMITS, OR ENGINEERING REQUIRED. WE DO NOT WARRANT FOR ENGINEERING ANALYSIS WHICH MAY BE REQUIRED

WOODY SAUNAS

CABINTEK LLC AND AFFILIATED COMPANIES CLAIMS OWNERSHIP OF THESE DOCUMENTS, ALL RIGHTS RESERVED. THIS DOCUMENT, AND THE IDEAS AND DESIGN INCORPORATED HEREIN, AS AN INSTRUMENT OF PROFESSIONAL SERVICE, IS THE SOLE PROPERTY OF CABINTEK LLC, AND IS NOT TO BE USED IN WHOLE OR IN PART FOR ANY OTHER PROJECT OR PURPOSE WITHOUT THE EXPRESSED WRITTEN AUTHORIZATION OF CABINTEK LLC. This document is copyrighted

CONTACT: www.cabintek.com or www.thewoodylogcabin.com : 920-390-4999
 THE "OWL" SAUNA 5 PERSON/WITH DRESSING ROOM © SHEET NO.
 DRAWN BY: SUGGESTED DESIGN BY CABINTEK LLC. 3-1-25
 CLIENT: